



## **School Breakfast and Lunch Program 2023-2024**

### **Breakfast and Lunch Offering:**

A nutritious breakfast and a nutritious lunch are served every day of the school year at all Catalina Foothills Schools and are available to every student. Please note that at the elementary and middle schools, lunch is not served on half days. However, breakfast is available at all schools. A variety of choices are available daily, and menus can be found on the district or school website, in the front office of the schools, or in the cafeteria. The elementary breakfast price is \$2.00 and elementary lunch is \$3.25. Middle and high school breakfasts are \$2.50, and lunches are \$3.50. Adult lunches at all locations are \$5.00 and breakfasts are \$3.00.

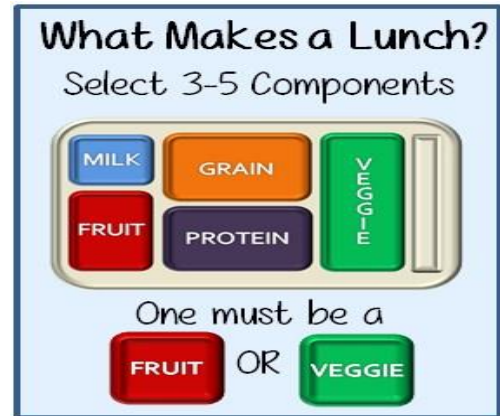
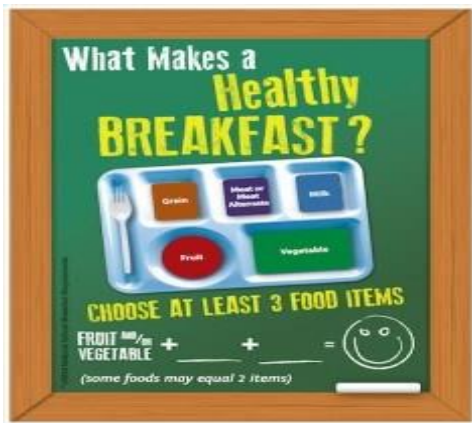
### **National School Breakfast and Lunch Program:**

Catalina Foothills Unified School District No. 16 participates in the National School Breakfast (NSBP) and Lunch Programs (NSLP). Due to USDA/ADE guidelines, there are requirements that the district must follow for the NSBP and NSLP programs in order to receive federal reimbursement. All schools will be on the regular NSBP and NSLP this year. Students free or reduced meal status is based on family income guidelines from the USDA/ADE programs.

Per USDA/ADE directed guidelines, students must choose three of the five components which are typically the entrée and ½ cup of vegetable and/or fruit and/or milk. Every meal which qualifies must include a ½ cup serving of fruit and/or vegetable. A variety of fruits and vegetables are offered during each meal service so students will have options each day.

For breakfast, we will be offer vs. serve. This means that each meal consists of four components which may include: meat or meat alternate, grains, fruit and/or vegetable and milk. Students must take three components and one of the components must be a ½ cup of fruit or vegetable to make a complete meal.

For lunch, we will also be offer vs. serve. This means that each meal consists of five components which include: meat or meat alternate, grain, fruit, vegetable and milk. Students must take at least three components, and one of those components must be a ½ cup of fruit or vegetable to make a complete reimbursable meal. If a student goes to the cash register and their meal does not include the required components, the student will be asked to choose a fruit or vegetable option to make the meal complete per USDA/ADE regulations. If any student does not want the fruit or vegetable, then the items on the tray will be charged at a la carte prices, including students who qualify for free or reduced meal status per ADE regulations.



**\*Students must choose at least ½ cup of fruit or ½ cup vegetable for breakfast and lunch as one of the components to be a complete reimbursable meal.**

### **A La Carte Items:**

**\*Please note that we want to continue having parents deposit-money for a la carte items on their students’ accounts at all school locations. Because of safety precautions and the lines moving more efficiently, we do not want to exchange cash.**

Middle schools and the high school offer a variety of a la carte items such as drinks and nutritious snacks which all meet USDA/ADE Guidelines. Please check the a la carte menus located at the schools to see what is available each day.

**Items offered at the snack carts are not part of a reimbursable meal and students must have money in their account in order to make a la carte purchases.**

### **Payment Options:**

1. Electronic payments are preferred and the safest pre-payment option. Lunch accounts can be funded through the InTouch online payment system. Please visit your school’s website to access the InTouch online payment system. Please pay any balance owed by your child on the InTouch online payment system. If you have questions about InTouch or have trouble accessing your child’s account, please contact Shawn Medford at (520) 209-7525 or smedford@cfsd16.org.
2. Checks will be accepted during the school year. At the elementary schools, checks can be dropped off at the office. Checks are loaded daily onto students’ accounts through InTouch.
3. Cash is also accepted during the school year to put on students’ accounts. At the elementary schools, cash can be dropped off at the front office to be entered into InTouch.

\*If you have any questions regarding the school breakfast or lunch program, please call (520) 209-8527.

\*Please note that refunds are only given to students leaving the district with a balance over \$15.00.

SFE is an equal opportunity provider.