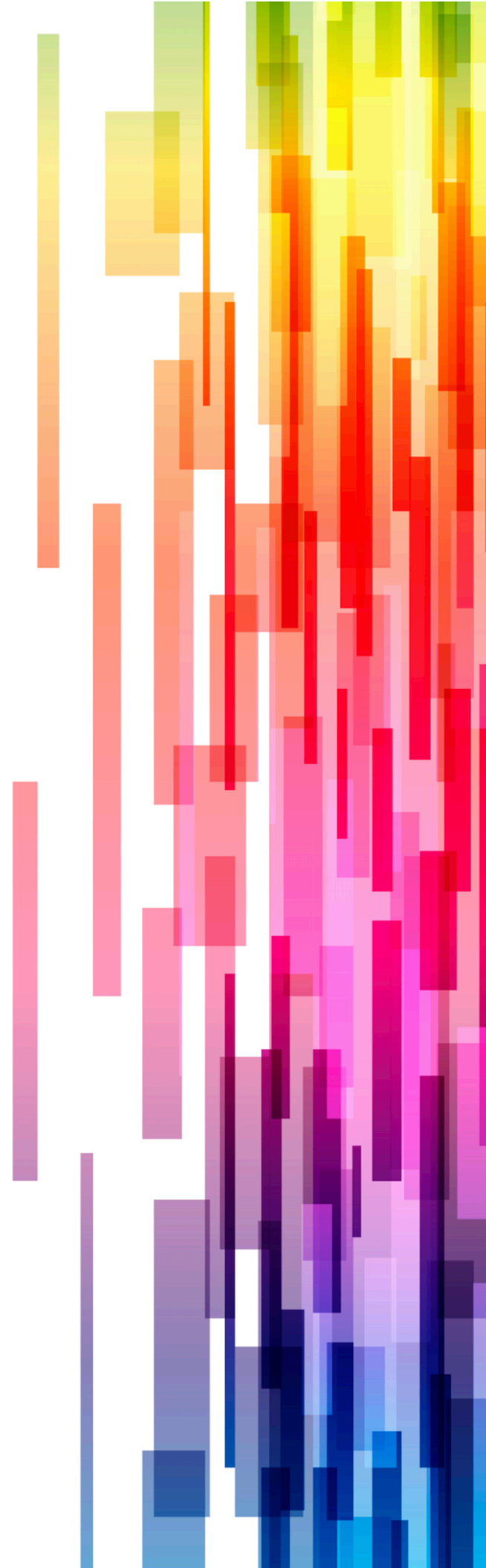




HIGH SCHOOL ENSEMBLE STEEL DRUMS

**ACADEMIC STANDARDS
PROFICIENT**

CATALINA FOOTHILLS SCHOOL DISTRICT
Approved by the Governing Board
June 27, 2017



STANDARDS FOR MUSIC ENSEMBLE HIGH SCHOOL STEEL DRUMS – PROFICIENT

CREATING (Imagine – Plan and Make)

Conceiving and developing new artistic ideas and work

MU.Cr1.1.E.HS1 Compose and improvise ideas for melodies, rhythmic passages, and arrangements for specific purposes that reflect characteristic(s) of music from a variety of historical periods studied in rehearsal.

MU.Cr2.1.E.HS1 Select and develop draft melodies, rhythmic passages, and arrangements for specific purposes that demonstrate understanding of characteristic(s) of music from a variety of historical periods studied in rehearsal.

MU.Cr2.2.E.HS1 Preserve draft compositions and improvisations through standard notation and audio recording.

CREATING (Evaluate and Refine – Present)

Conceiving and developing new artistic ideas and work

MU.Cr3.1.E.HS1 Evaluate and refine draft melodies, rhythmic passages, arrangements, and improvisations based on established criteria, including the extent to which they address identified purposes.

MU.Cr3.2.E.HS1 Share personally-developed melodies, rhythmic passages, and arrangements – individually or as an ensemble – that address identified purposes.

PERFORMING (Select – Analyze – Interpret)

Realizing artistic ideas and work through interpretation and presentation

MU.Pr1.1.E.HS1 Explain the criteria used to select a varied repertoire to study based on an understanding of theoretical and structural characteristics of the music, the technical skill of the individual or ensemble, and the purpose or context of the performance.

MU.Pr1.2.E.HS1 Demonstrate, using music reading skills where appropriate, how compositional devices employed and theoretical and structural aspects of musical works impact and inform prepared or improvised performances.

MU.Pr1.3.E.HS1 Demonstrate an understanding of context in a varied repertoire of music through prepared and improvised performances.

PERFORMING (Rehearse – Evaluate and Refine)

Realizing artistic ideas and work through interpretation and presentation

MU.Pr2.1.E.HS1 Develop strategies to address expressive challenges in a varied repertoire of music, and evaluate their success using feedback from ensemble peers and other sources to refine performances.

MU.Pr2.2.E.HS1 Demonstrate appropriate rehearsal etiquette.

PERFORMING (Present)**Realizing artistic ideas and work through interpretation and presentation**

MU.Pr3.1.E.HS1 Demonstrate attention to technical accuracy and expressive qualities in prepared and improvised performances of a varied repertoire of music representing diverse cultures, styles, and genres.

PERFORMING (Present)**Realizing artistic ideas and work through interpretation and presentation**

MU.Pr3.2.E.HS1 Demonstrate an understanding of expressive intent by connecting with an audience through prepared and improvised performances.

MU.Pr3.3.E.HS1 Demonstrate appropriate audience etiquette.

RESPONDING (Select – Analyze – Interpret)**Understanding and evaluating how the arts convey meaning**

MU.Re1.1.E.HS1 Apply criteria to select music for specified purposes, supporting choices by citing characteristics found in the music and connections to interest, purpose, and context.

MU.Re1.2.E.HS1 Explain how the analysis of passages and understanding the way the elements of music are manipulated inform the response to music.

MU.Re2.1.E.HS1 Explain and support interpretations of the expressive intent and meaning of musical works, citing as evidence the treatment of the elements of music, contexts, (when appropriate) the setting of the text, and personal research.

RESPONDING (Evaluate)**Understanding and evaluating how the arts convey meaning**

MU.Re3.1.E.HS1 Evaluate works and performances based on personally- or collaboratively-developed criteria, including analysis of the structure and context.

CONNECTING (Connect)**Relating artistic ideas and work with personal meaning and external context.**

MU.Cn1.1.E.HS1 Demonstrate how interests, knowledge, and skills relate to personal choices and intent when creating, performing, and responding to music.

MU.Cn2.1.E.HS1 Demonstrate understanding of relationships between music and the other arts, other disciplines, varied contexts, and daily life.

